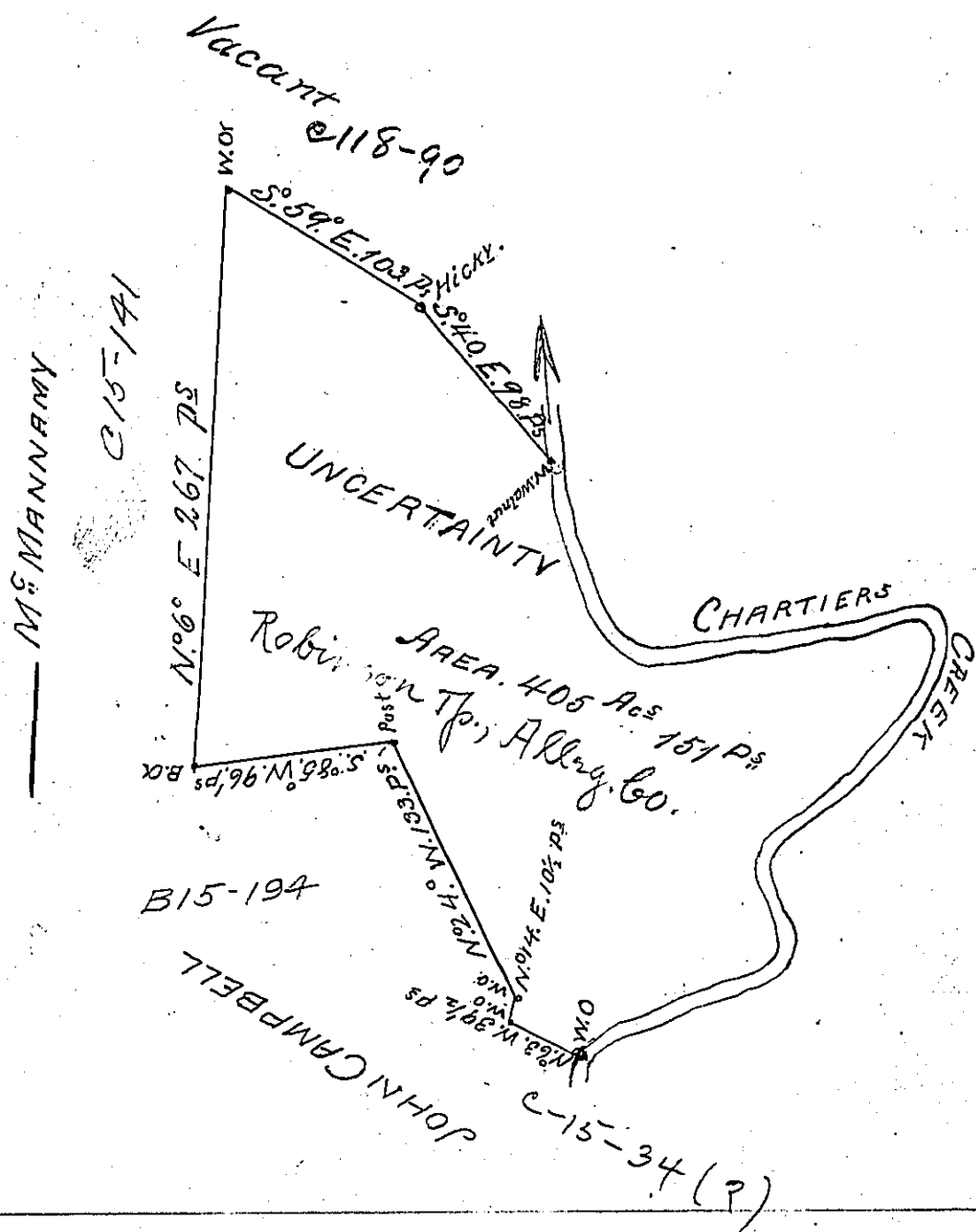


1884
 COURSES AT THE C^o
 FROM Y^e. WHITE WALNUT
 P-14-171
 S^o 11^o E. 41 P^s
 S^o 28^o E. 50 D^o
 N^o 85^o E. 112 D^o
 N^o 77^o E. 30 D^o
 S^o 42^o E. 14 D^o
 S^o 35^o W. 93 D^o
 S^o 62^o W. 82 D^o
 S^o 7^o W. 26 D^o
 S^o 15^o E. 32 D^o
 S^o 67^o W. 104 D^o
 S^o 51^o W. 9 1/2 D^o
 TO Y^e. WHITE OX

549 1/2



A Draught of a Survey called Uncertainty lying on Chartiers Cr^o in Washington County, contg. 405 Ac. 151 P^s strict Measure, executed Sept. 10th 1785. In consequence of a Certificate for 400. Ac. granted to James Bell by the Commiss^{rs} appointed by Virga to adjust the Titles to unpatented Lands in the Counties of Monongia, Yohg^a & Ohio, and duly entered with the County Surveyor as appears from the authenticated List of Entries transmitted from y^e. Surveyor Gen^l's Office. Ent^d 24th Feby. 1780 — Ret^d 3rd May 1786

John Lukens Esq^r }
 Survey Gen^l }

Presley Nevill }
 Math^{ew} Ritchie }

IN TESTIMONY that the above is a copy of the original remaining on file in the Department of Internal Affairs of Pennsylvania, made conformably to an Act of Assembly approved the 16th day of February, 1833, I have hereunto set my Hand and caused the Seal of said Department to be affixed at Harrisburg, this sixth day of October 1903

James P. Brown
 Secretary of Internal Affairs